



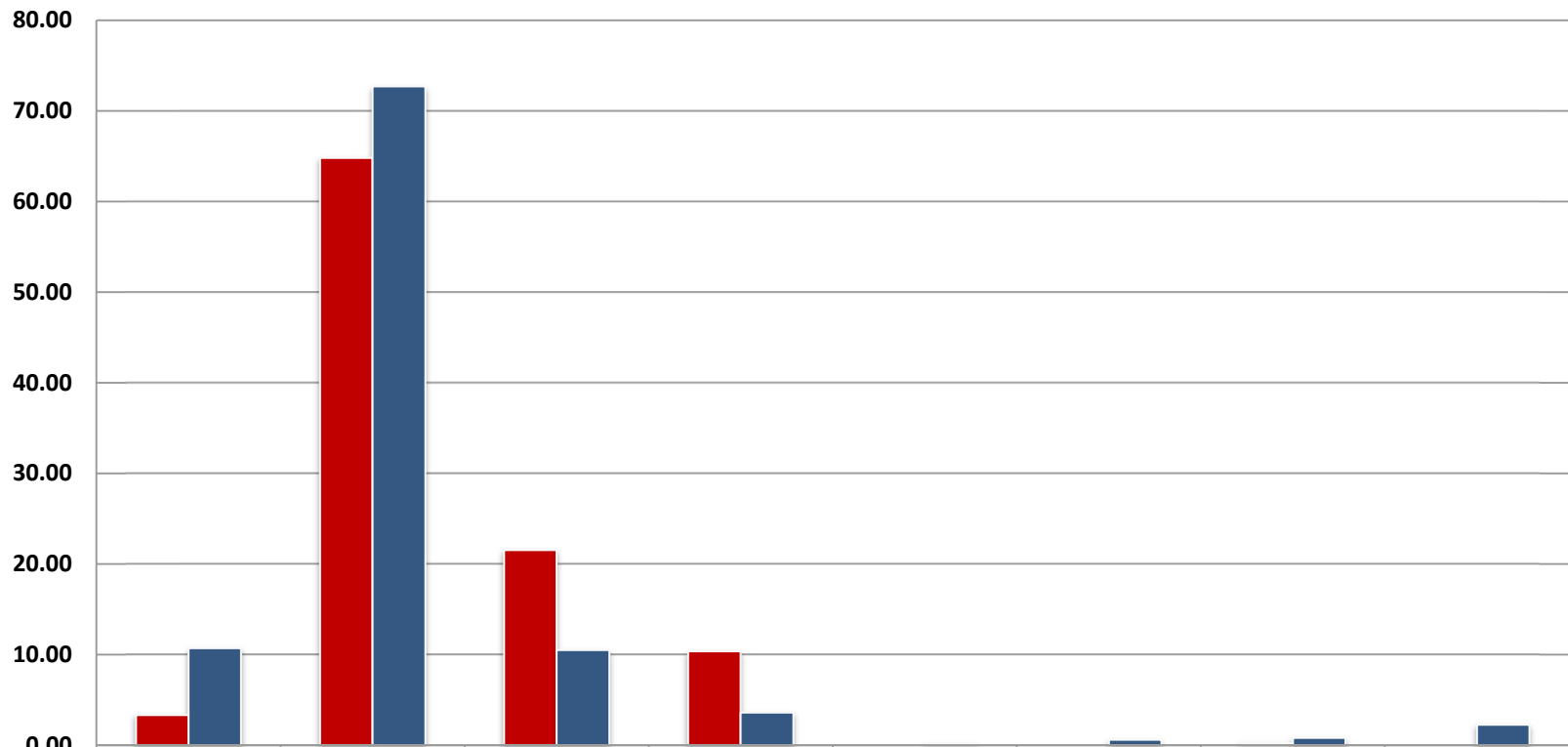
U.S. Department of Commerce

Quarter III

Fiscal Year 2012

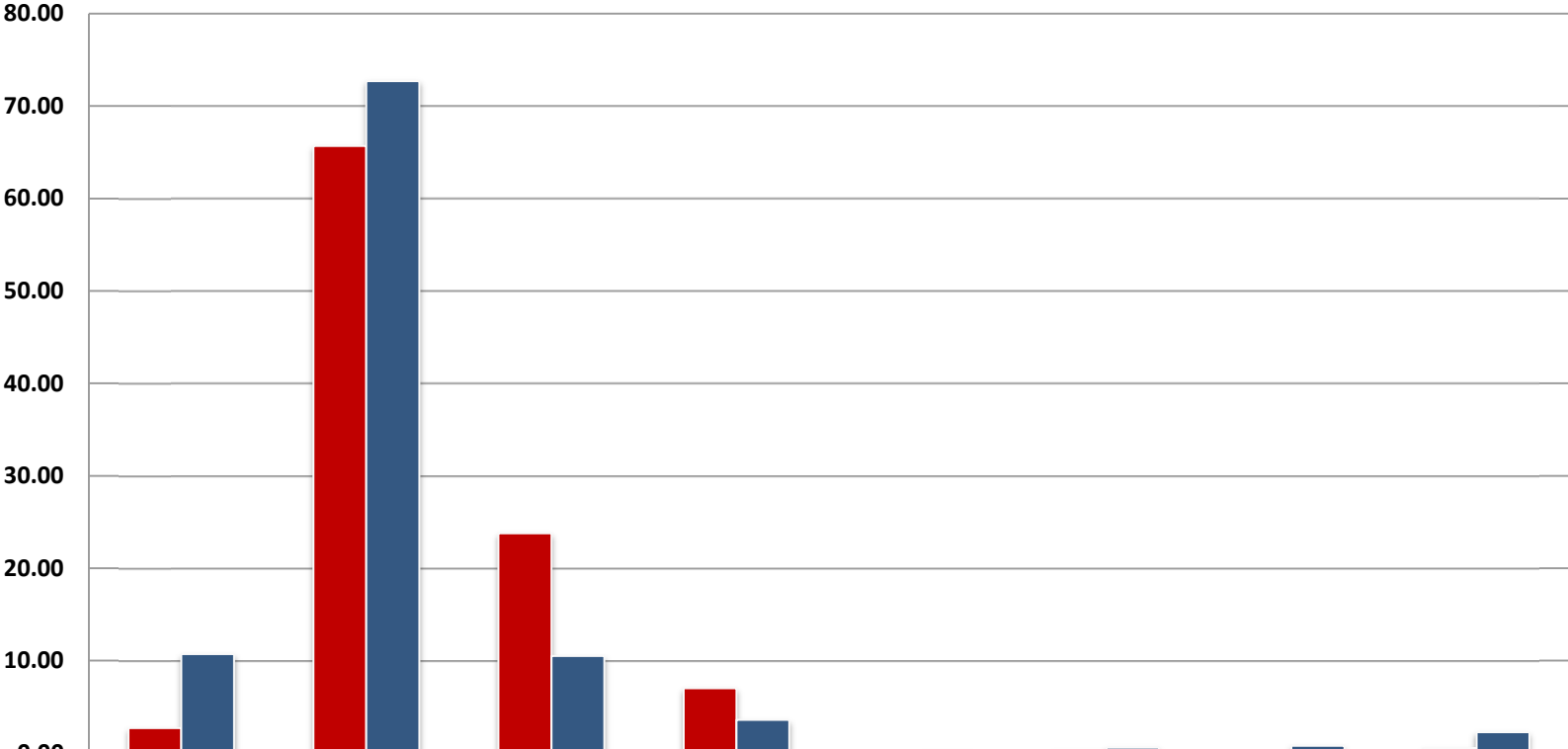
Departmental Workforce Profile

BEA Quarter 3 2012



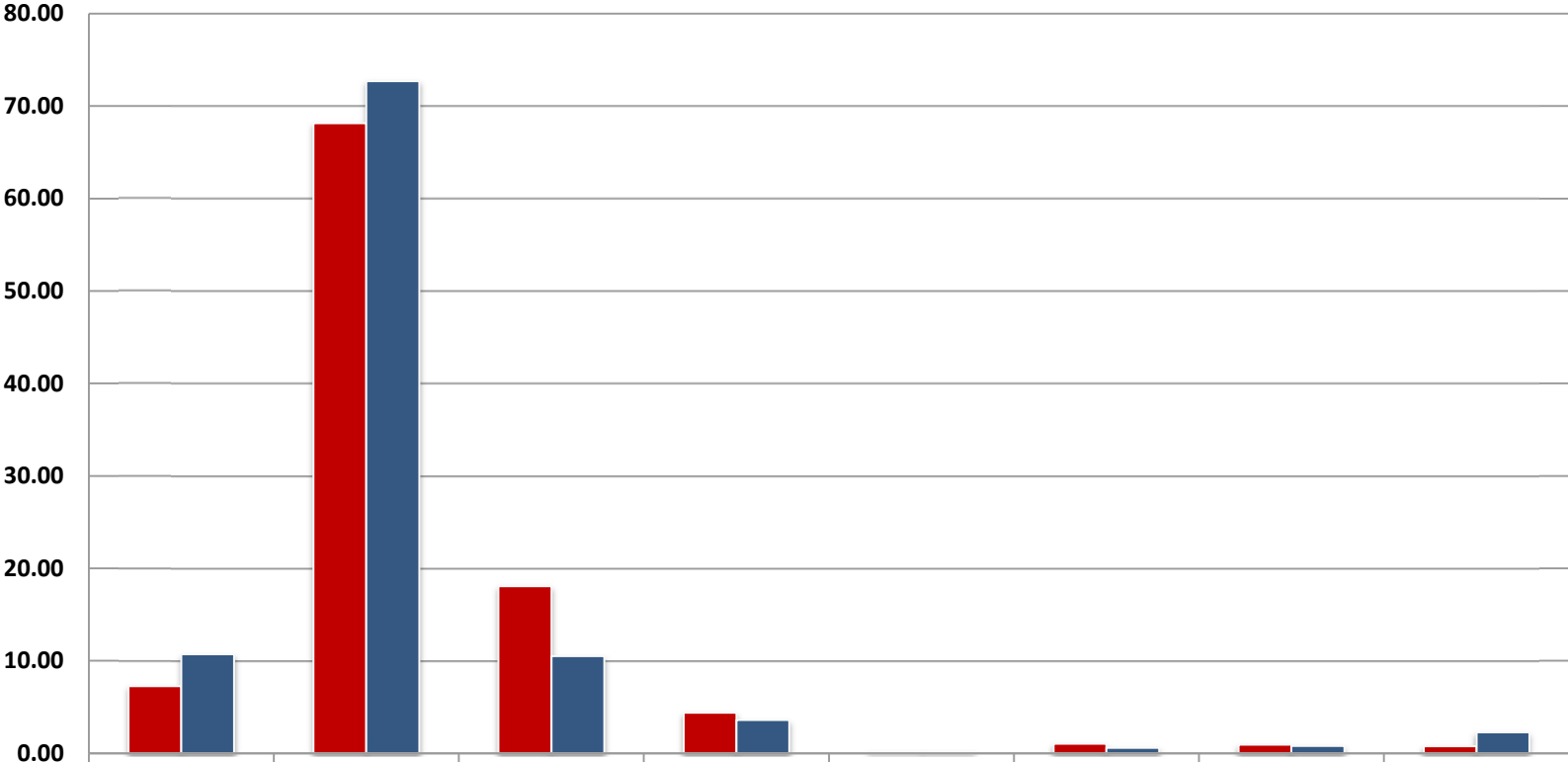
	Hispanic or Latino	White	Black or African American	Asian	Native Hawaiian or Other Pacific Islander	American Indian or Alaska Native	Multiple Races	Targeted Disability
■ Workforce	3.31	64.80	21.53	10.35	0.00	0.00	0.21	0.00
■ CLF	10.7	72.7	10.5	3.6	0.2	0.6	0.8	2.27

BIS Quarter 3 2012



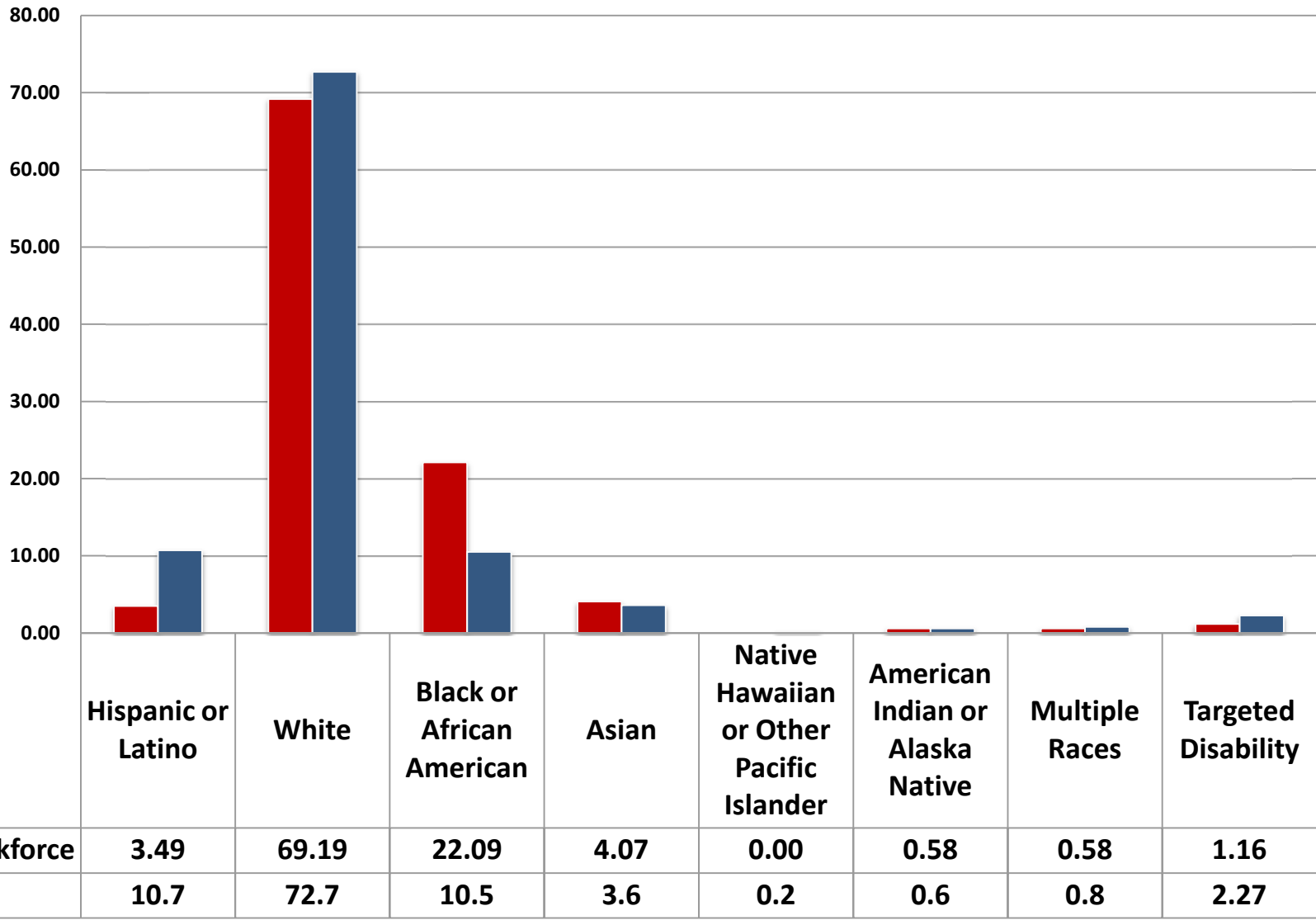
■ Workforce	2.70	65.68	23.78	7.03	0.00	0.27	0.00	0.54
■ CLF	10.7	72.7	10.5	3.6	0.2	0.6	0.8	2.27

Census Quarter 3 2012

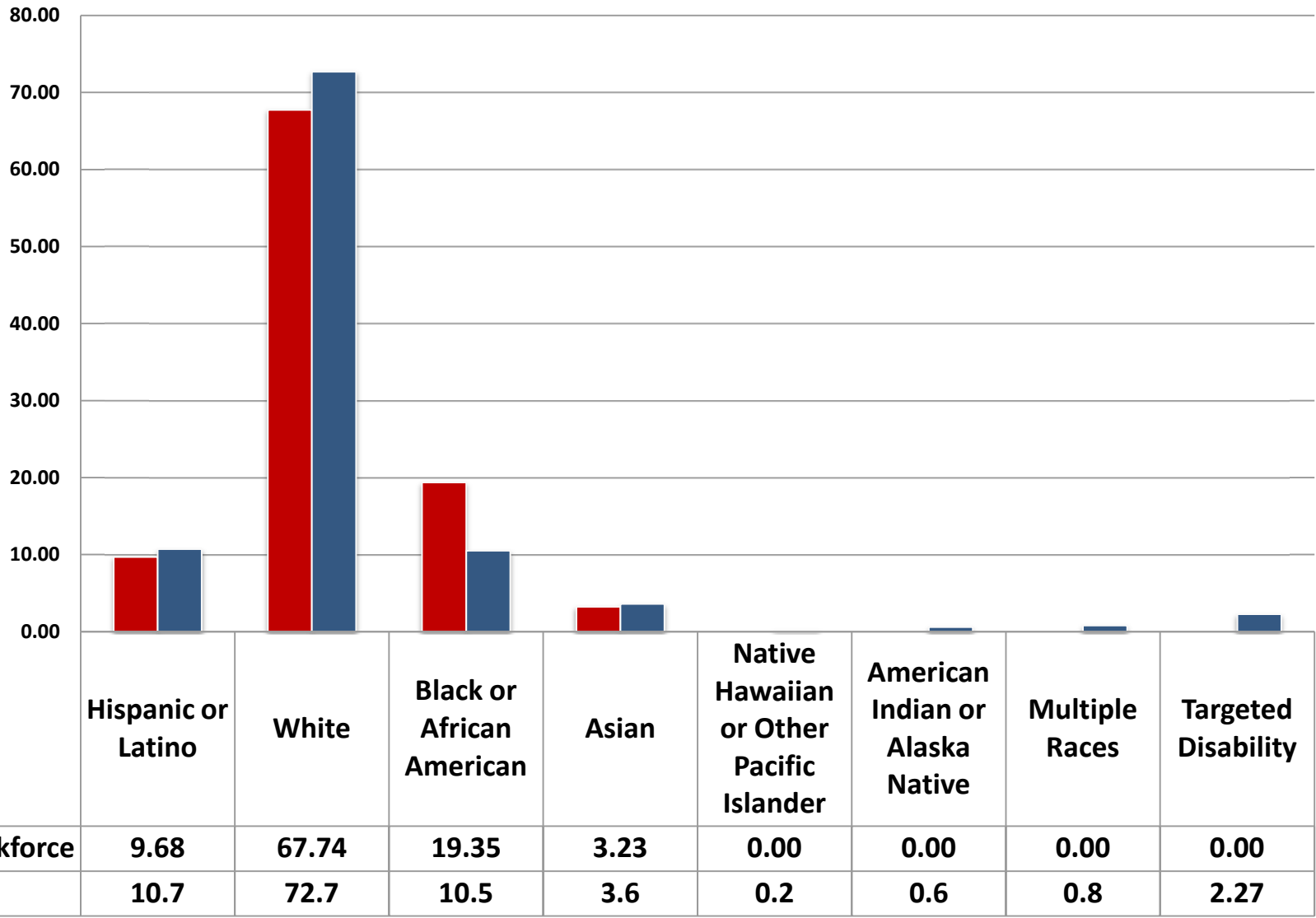


	Hispanic or Latino	White	Black or African American	Asian	Native Hawaiian or Other Pacific Islander	American Indian or Alaska Native	Multiple Races	Targeted Disability
■ Workforce	7.26	68.16	18.06	4.39	0.14	1.05	0.94	0.76
■ CLF	10.7	72.7	10.5	3.6	0.2	0.6	0.8	2.27

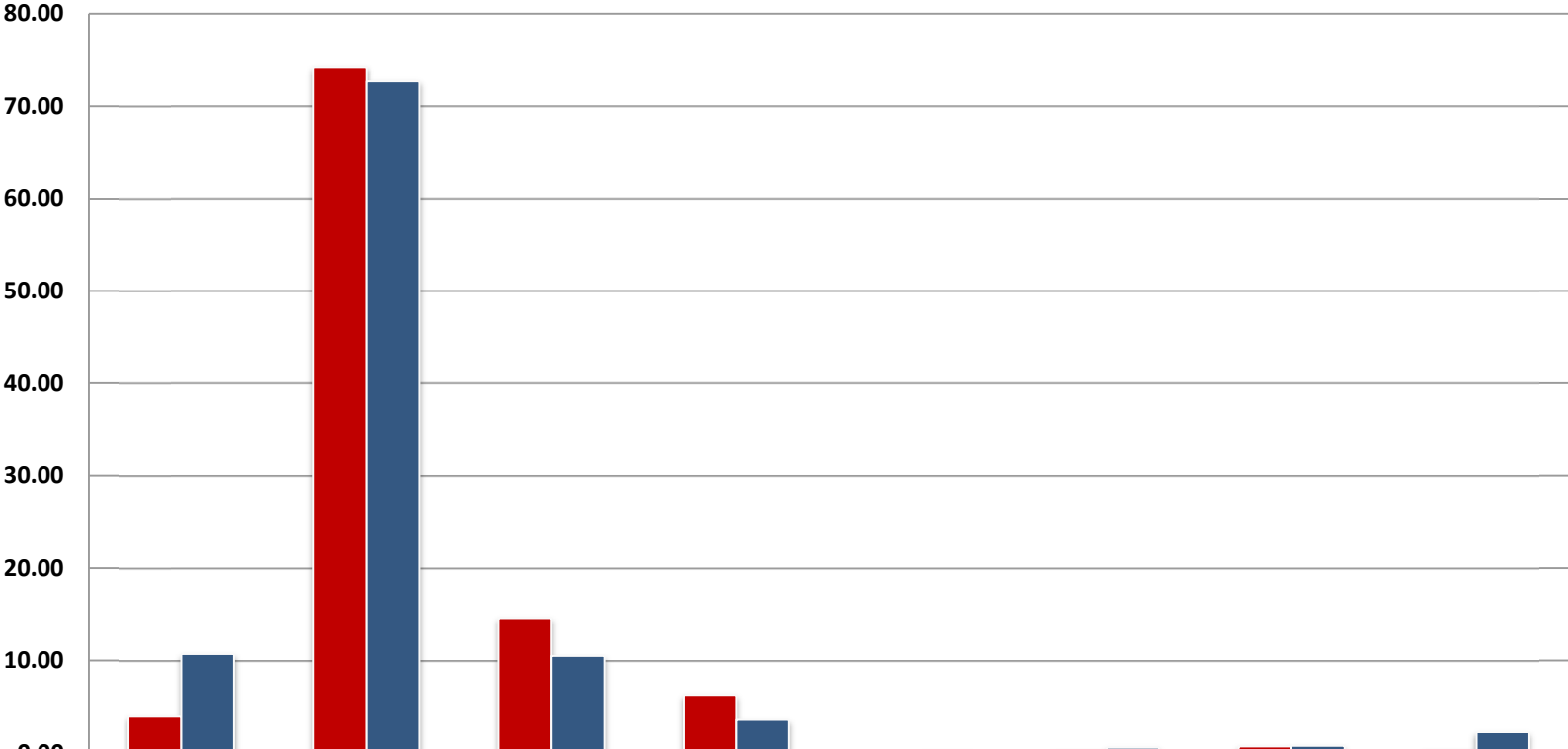
EDA Quarter 3 2012



ESA Quarter 3 2012

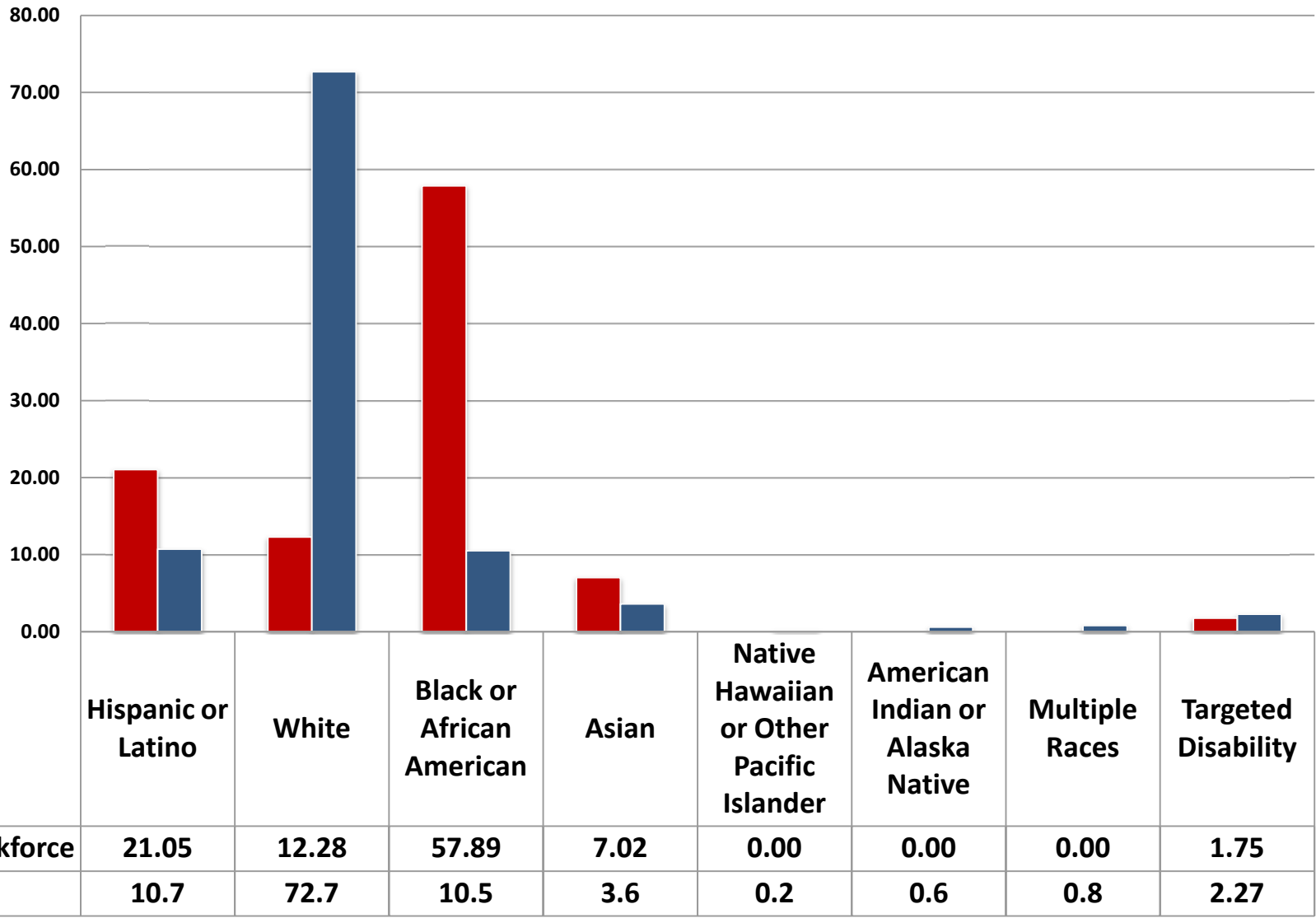


ITA Quarter 3 2012

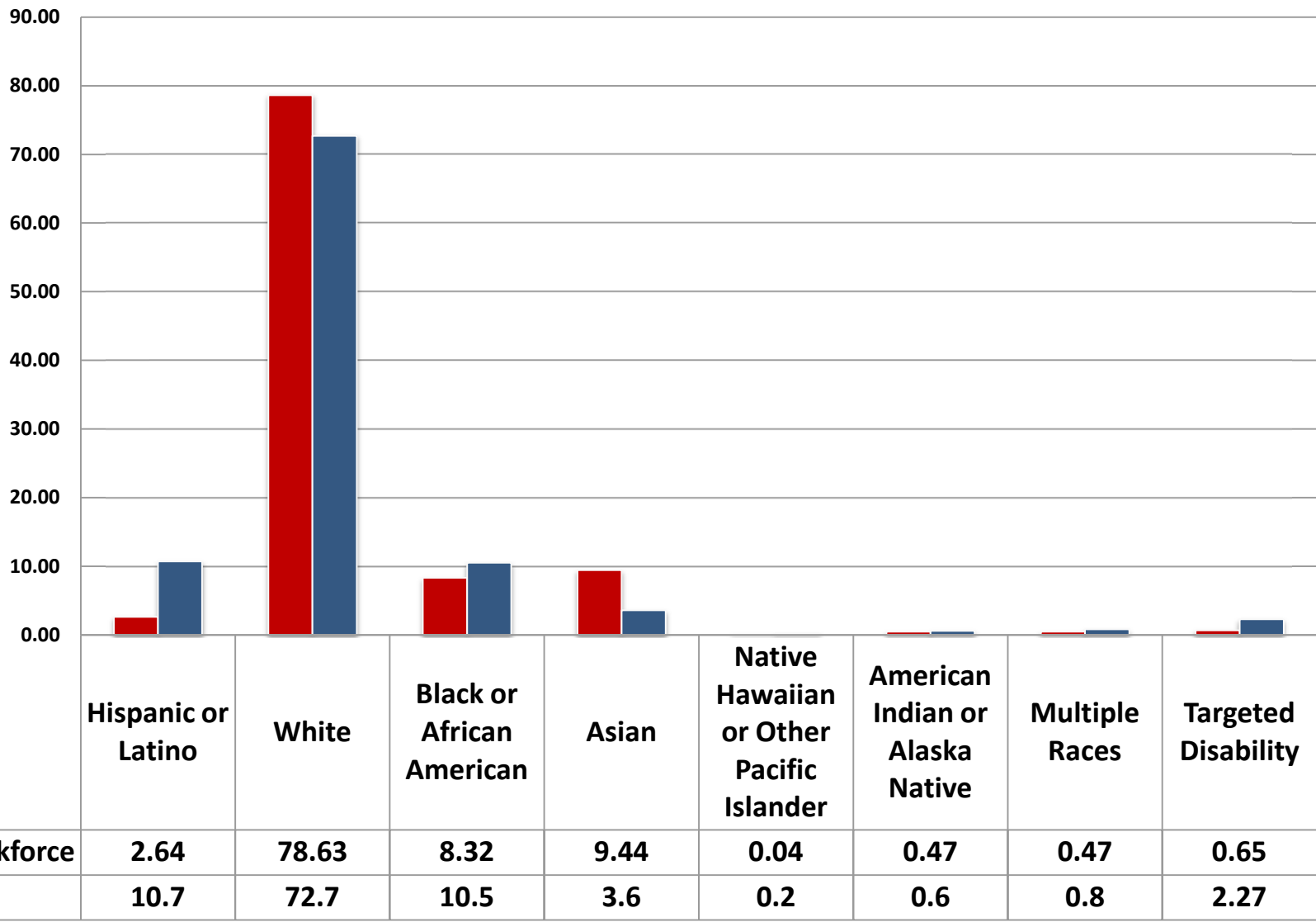


■ Workforce	3.93	74.16	14.63	6.31	0.00	0.22	0.74	0.30
■ CLF	10.7	72.7	10.5	3.6	0.2	0.6	0.8	2.27

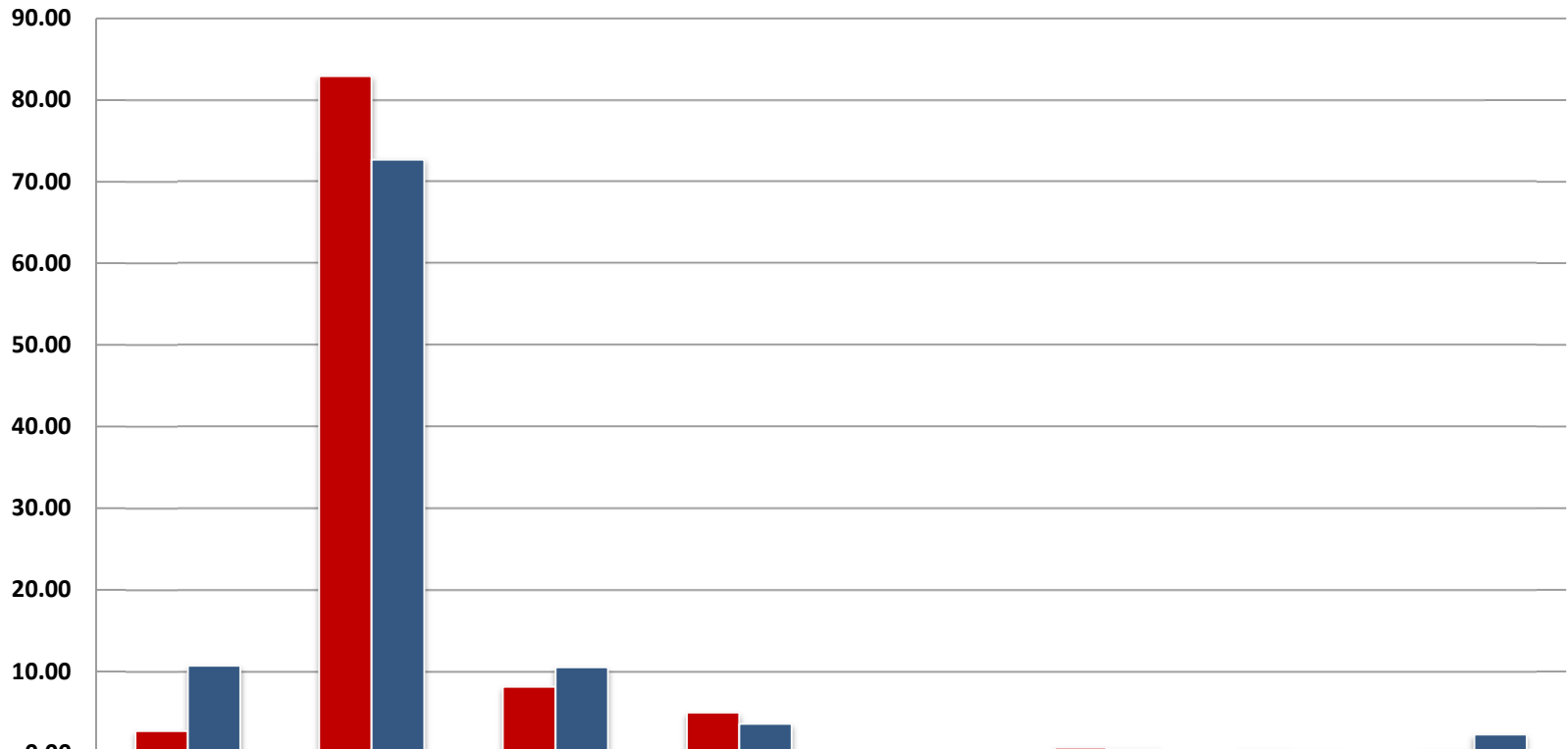
MBDA Quarter 3 2012



NIST Quarter 3 2012

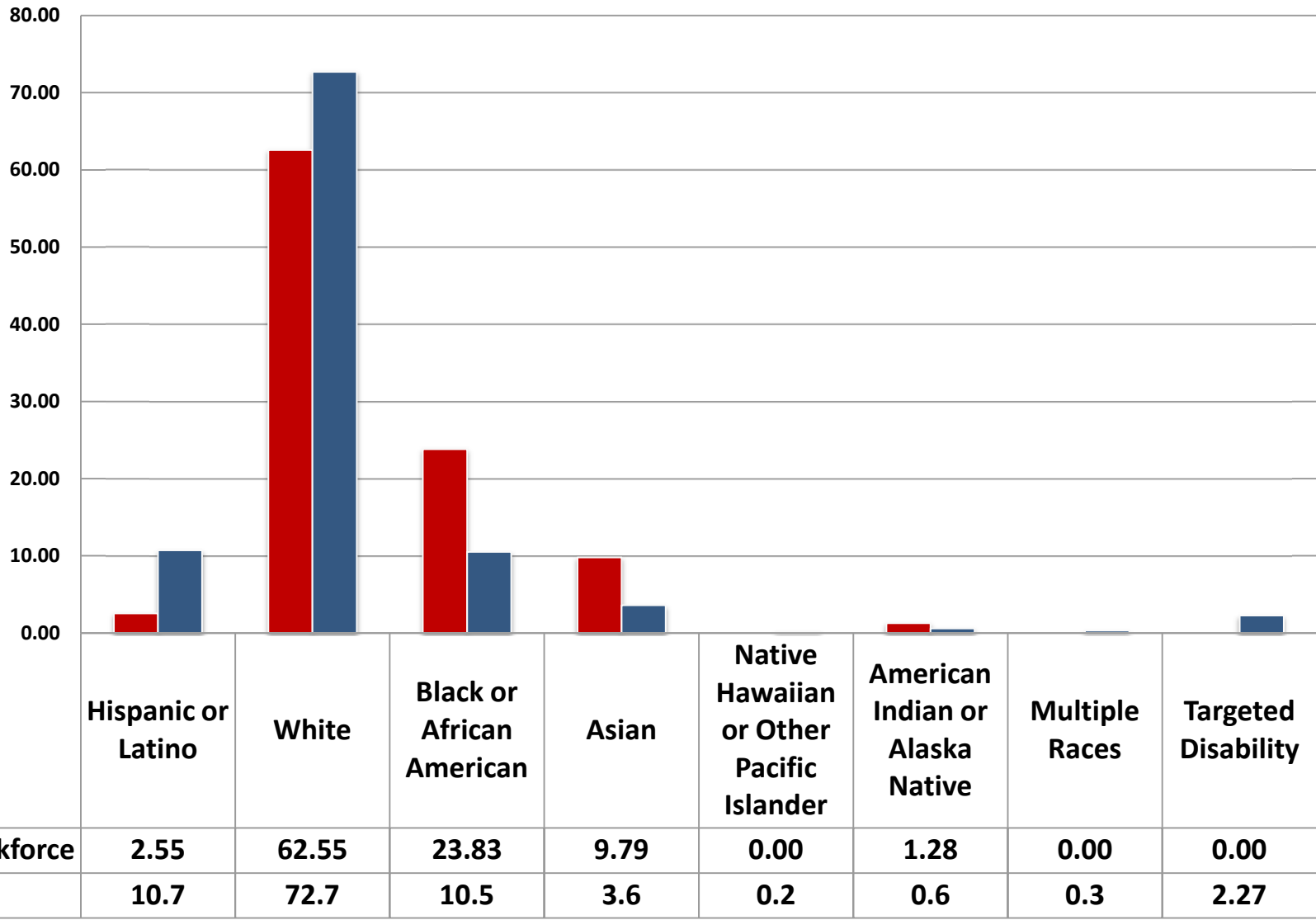


NOAA Quarter 3 2012

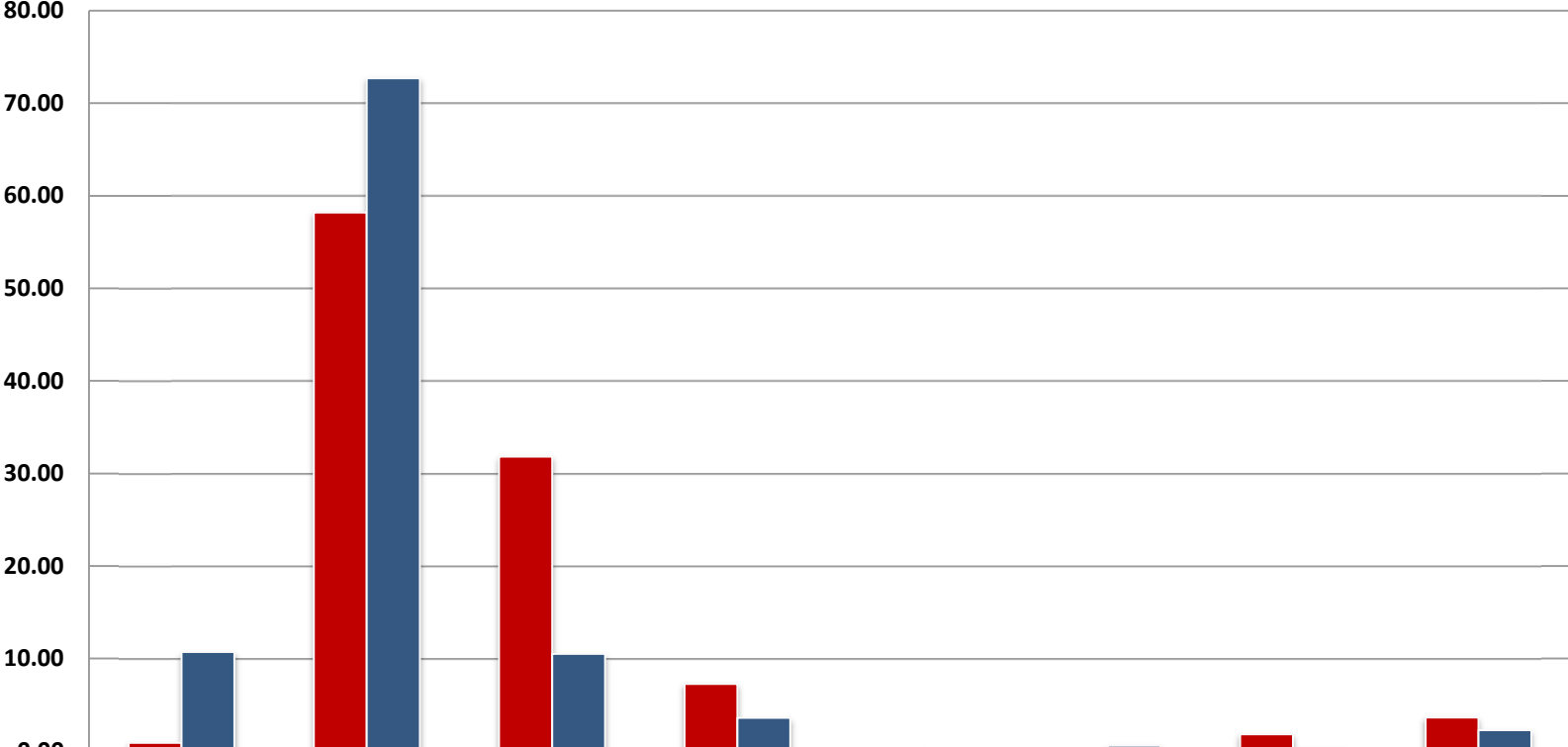


	Hispanic or Latino	White	Black or African American	Asian	Native Hawaiian or Other Pacific Islander	American Indian or Alaska Native	Multiple Races	Targeted Disability
■ Workforce	2.72	82.93	8.12	4.95	0.23	0.66	0.38	0.37
■ CLF	10.7	72.7	10.5	3.6	0.2	0.6	0.3	2.27

NTIA Quarter 3 2012

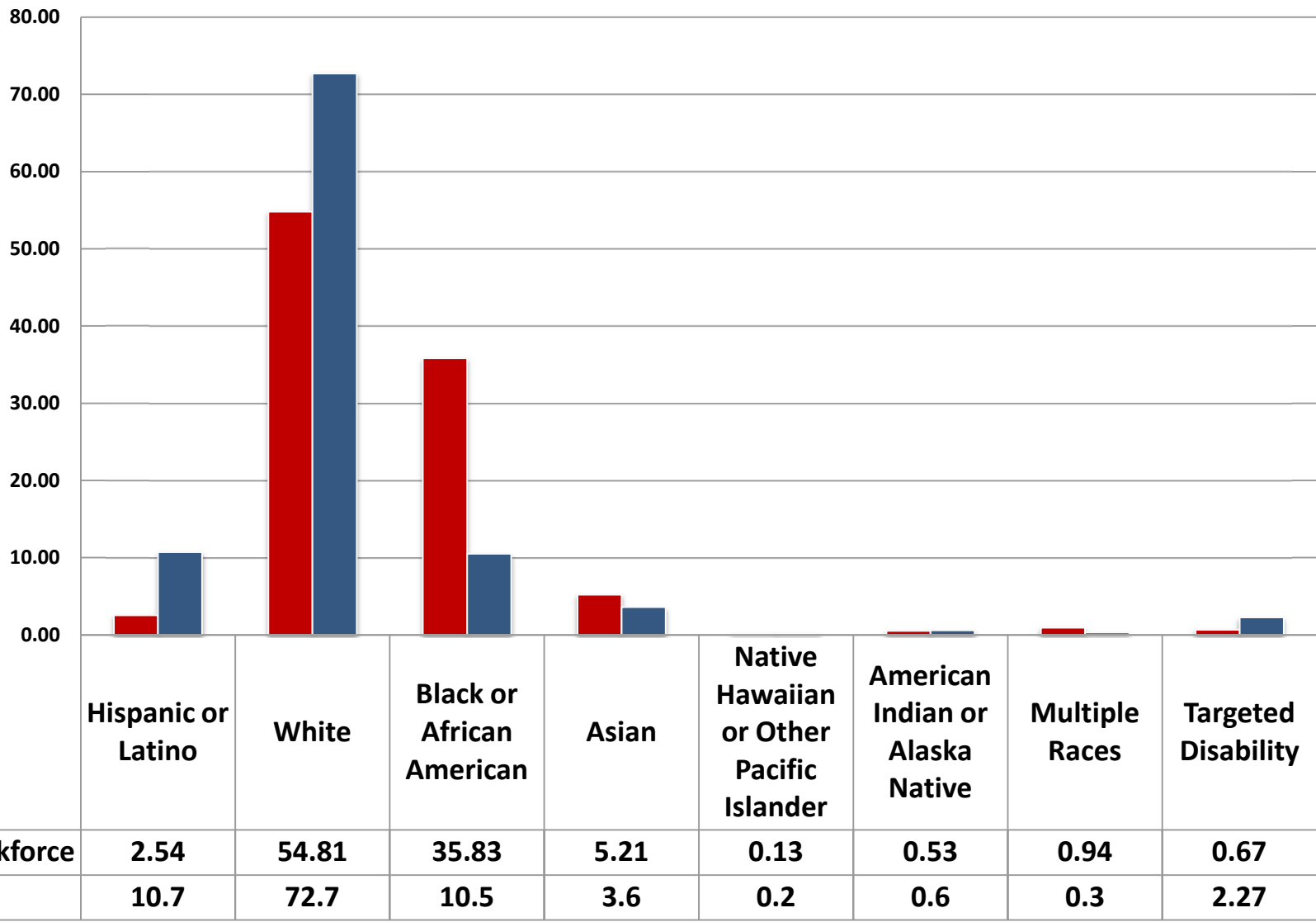


NTIS Quarter 3 2012

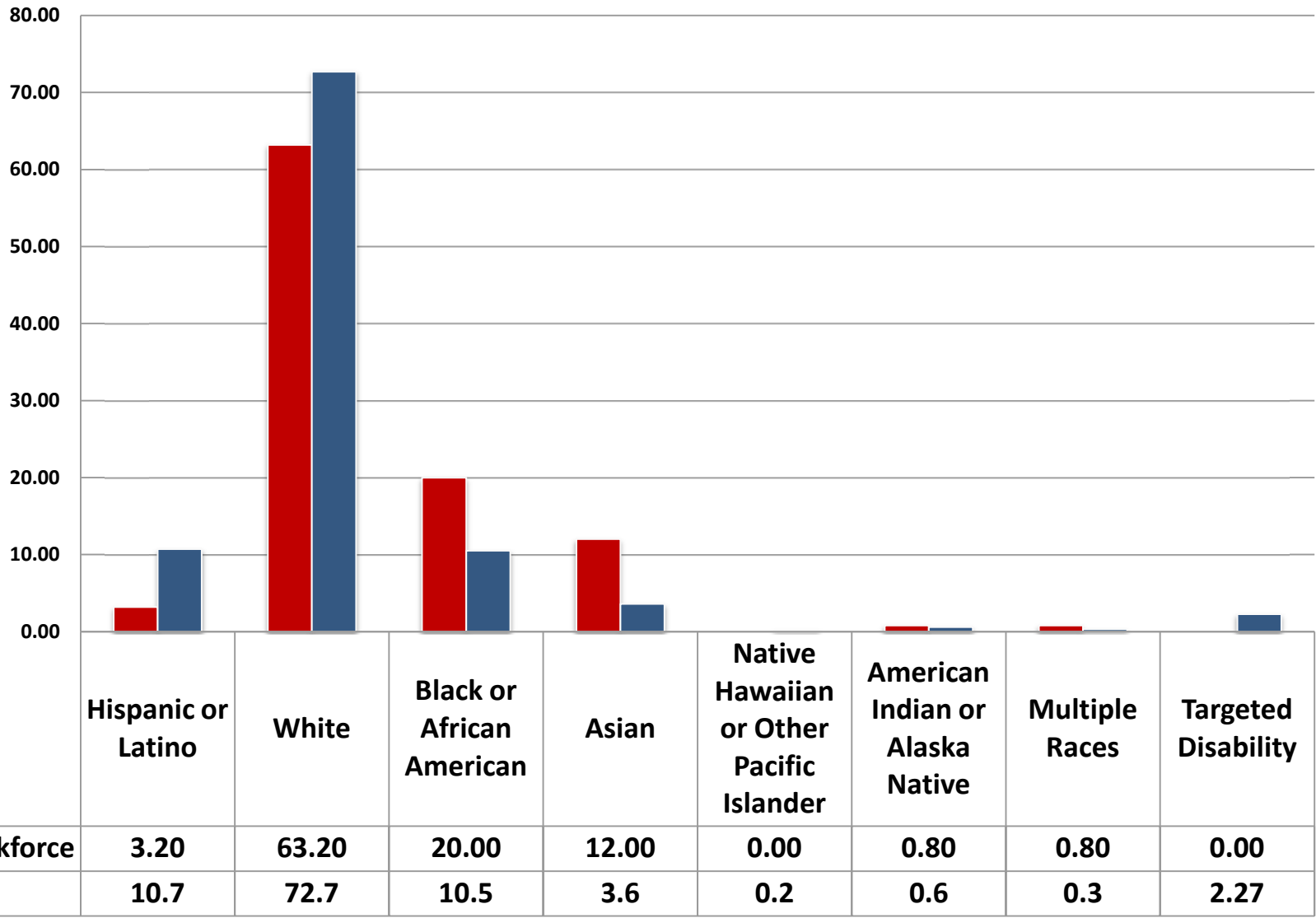


	Hispanic or Latino	White	Black or African American	Asian	Native Hawaiian or Other Pacific Islander	American Indian or Alaska Native	Multiple Races	Targeted Disability
■ Workforce	0.91	58.18	31.82	7.27	0.00	0.00	1.82	3.64
■ CLF	10.7	72.7	10.5	3.6	0.2	0.6	0.3	2.27

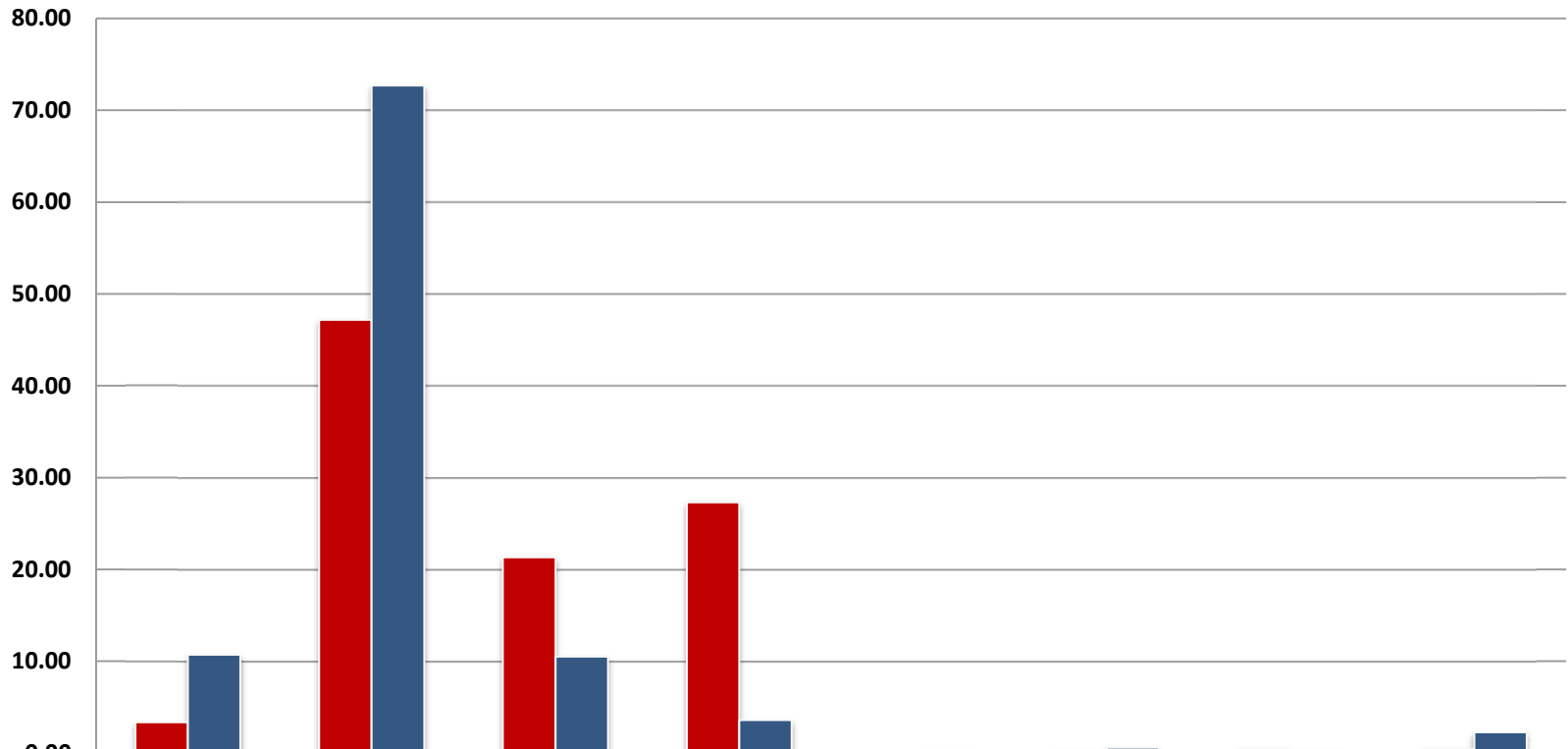
OS Quarter 3 2012



OIG Quarter 3 2012

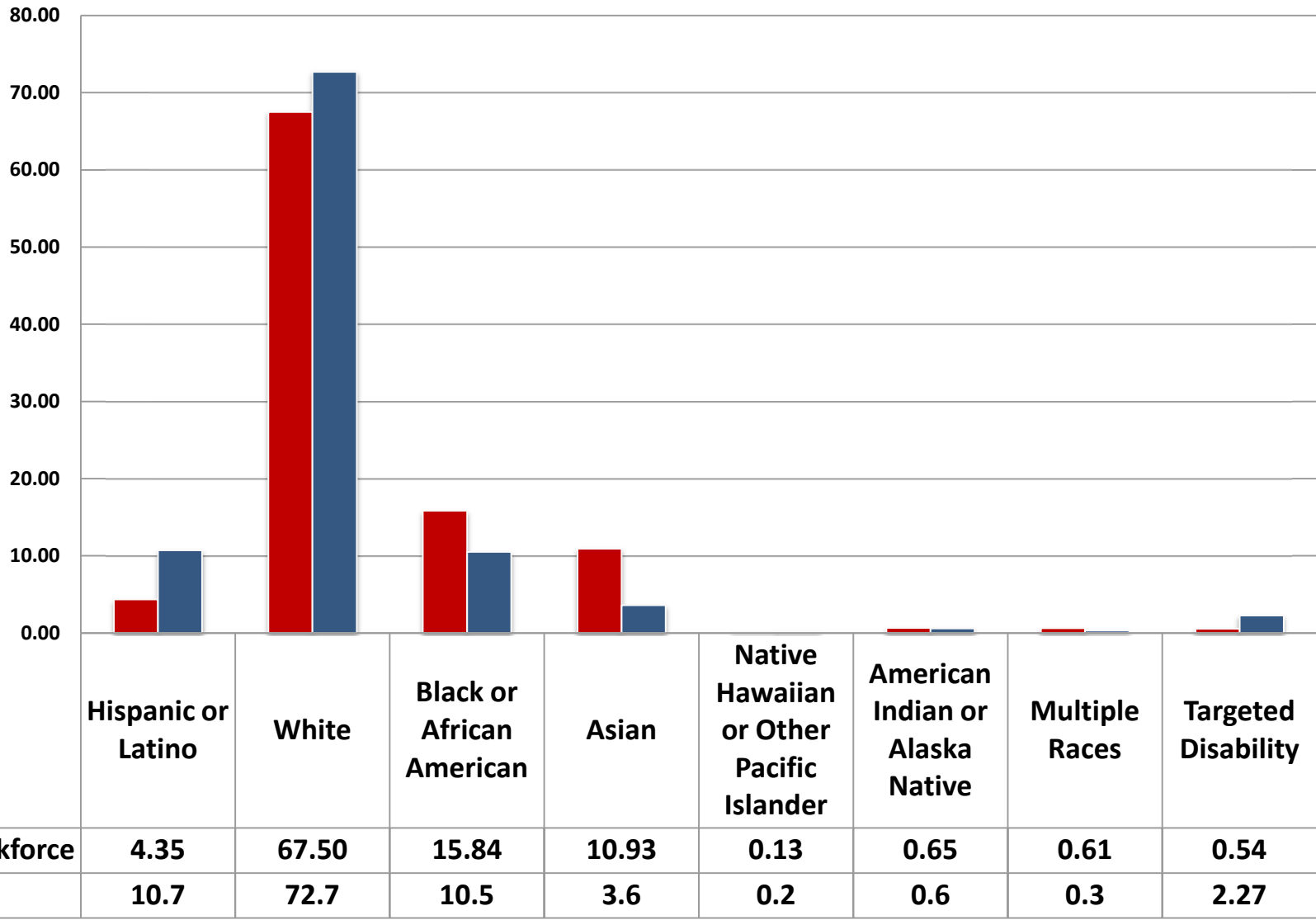


PTO Quarter 3 2012

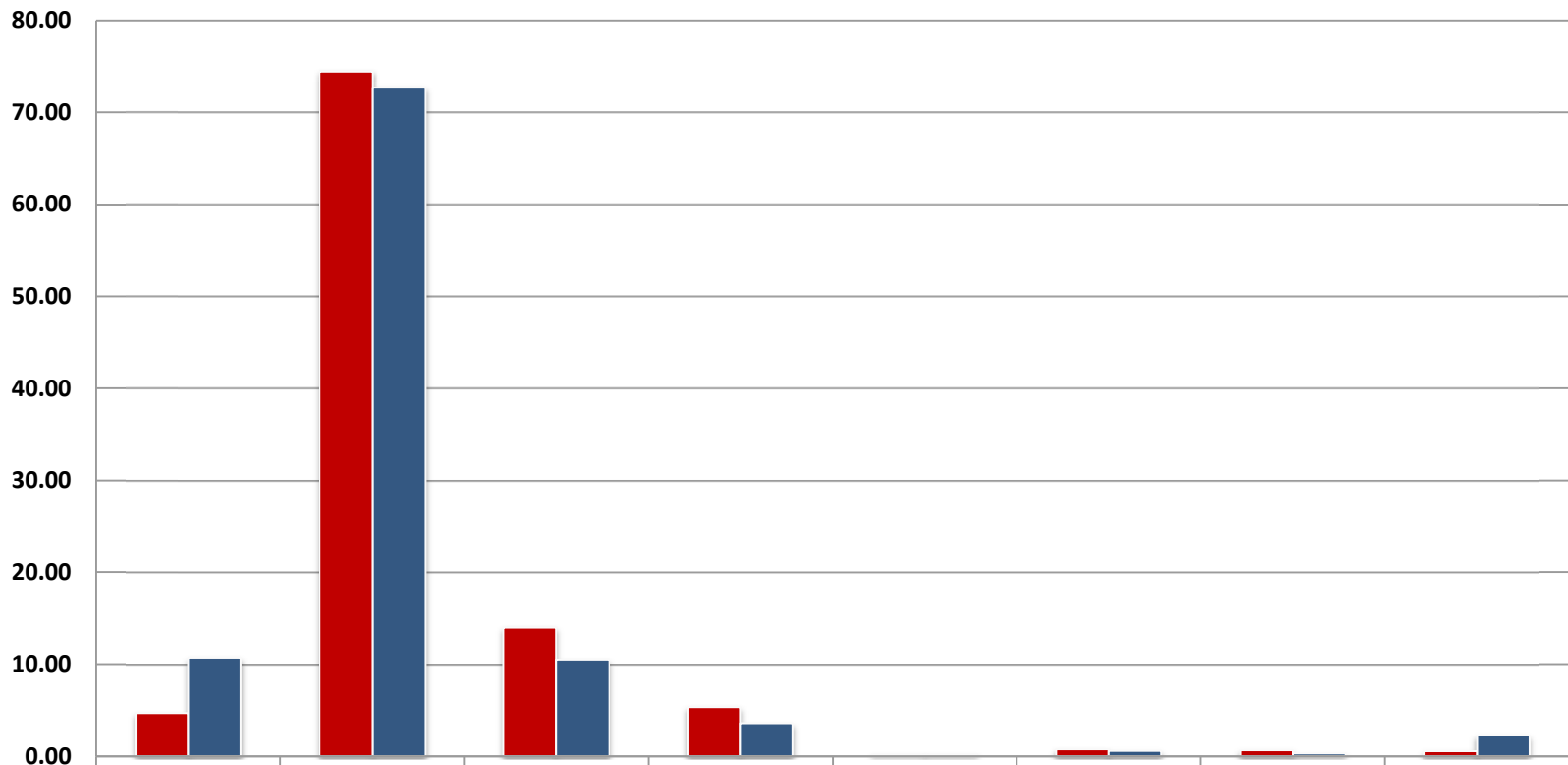


	Hispanic or Latino	White	Black or African American	Asian	Native Hawaiian or Other Pacific Islander	American Indian or Alaska Native	Multiple Races	Targeted Disability
■ Workforce	3.37	47.18	21.33	27.31	0.04	0.30	0.47	0.46
■ CLF	10.7	72.7	10.5	3.6	0.2	0.6	0.3	2.27

DOC All Quarter 3 2012



DOC Non-PTO Quarter 3 2012



	Hispanic or Latino	White	Black or African American	Asian	Native Hawaiian or Other Pacific Islander	American Indian or Alaska Native	Multiple Races	Targeted Disability
■ Workforce	4.68	74.44	13.96	5.34	0.16	0.77	0.66	0.57
■ CLF	10.7	72.7	10.5	3.6	0.2	0.6	0.3	2.27

Table A1: TOTAL WORKFORCE - Distribution by Race/Ethnicity and Sex

Employment Tenure	Total Employees	RACE/ETHNICITY						Multiple Races
		Hispanic or Latino	Non-Hispanic or Latino					
			White	Black or African American	Asian	Native Hawaiian or Other Pacific Islander	American Indian or Alaska	
All								

TOTAL

Prior FY	#	44,461	1,885	30,302	7,009	4,678	59	284	244
	%	100.0%	4.2%	68.2%	15.8%	10.5%	0.1%	0.6%	0.5%
Current FY	#	44,846	1,945	30,384	7,051	4,826	59	285	296
	%	100.0%	4.3%	67.8%	15.7%	10.8%	0.1%	0.6%	0.7%
CLF (2000)	%	100.0%	10.2%	72.7%	10.5%	3.6%	0.2%	0.6%	0.3%
Difference	#	385	60	82	42	148	0	1	52
Ratio Change	%	0.0%	0.1%	-0.4%	0.0%	0.2%	0.0%	0.0%	0.1%
Net Change	%	0.9%	3.2%	0.3%	0.6%	3.2%	0.0%	0.4%	21.3%
PERMANENT									
Prior FY	#	42,623	1,814	28,926	6,782	4,552	53	277	219
	%	100.0%	4.3%	67.9%	15.9%	10.7%	0.1%	0.6%	0.5%
Current FY	#	43,055	1,872	29,064	6,817	4,705	54	281	262
	%	100.0%	4.3%	67.5%	15.8%	10.9%	0.1%	0.7%	0.6%
Difference	#	432	58	138	35	153	1	4	43
Ratio Change	%	0.0%	0.1%	-0.4%	-0.1%	0.2%	0.00%	0.00%	0.09%
Net Change	%	1.0%	3.2%	0.5%	0.5%	3.4%	1.9%	1.4%	19.6%
TEMPORARY									
Prior FY	#	1,838	71	1,376	227	126	6	7	25
	%	100.0%	3.9%	74.9%	12.4%	6.9%	0.3%	0.4%	1.4%
Current FY	#	1,791	73	1,320	234	121	5	4	34
	%	100.0%	4.1%	73.7%	13.1%	6.8%	0.3%	0.2%	1.9%
Difference	#	-47	2	-56	7	-5	-1	-3	9
Ratio Change	%	0.0%	0.2%	-1.2%	0.7%	-0.1%	0.0%	-0.2%	0.5%
Net Change	%	-2.6%	2.8%	-4.1%	3.1%	-4.0%	-16.7%	-42.9%	36.0%

Table B1: TOTAL WORKFORCE - Distribution by Disability

Employment Tenure	Total	Total by Disability Status				Detail for Targeted Disabilities									
		[05] No Disability	[01] Not Identified	[06-94] Disability	Targeted Disability	[16,17] Deafness	[23,25] Blindness	[28, 32-38] Missing Limbs	[64-68] Partial Paralysis	[71-78] Total Paralysis	[82] Convulsive Disorder	[90] Mental Re-tardation	[91] Mental Illness	[92] Distortion of Limb/ Spine	
TOTAL															
Prior FY	#	44,461	40,337	1,201	2,657	266	22	14	2	14	5	60	22	120	7
	%	100.0%	90.7%	2.7%	6.0%	0.6%	0.0%	0.0%	0.0%	0.0%	0.0%	0.1%	0.0%	0.3%	0.0%
Current FY	#	44,846	40,618	1,223	2,766	239	12	7	2	7	4	61	20	120	6
	%	1.0%	0.9%	0.0%	0.1%	0.0%	0.0%	0.0%	0.0%	0.0%	0.0%	0.0%	0.0%	0.0%	0.0%
Difference	#	385	281	22	109	-27	-10	-7	0	-7	-1	1	-2	0	-1
Ratio Change	%	0.0%	-0.2%	0.0%	0.2%	-0.1%	0.0%	0.0%	0.0%	0.0%	0.0%	0.0%	0.0%	0.0%	0.0%
Net Change	%	0.9%	0.7%	1.8%	4.1%	-10.2%	-45.5%	-50.0%	0.0%	-50.0%	-20.0%	1.7%	-9.1%	0.0%	-14.3%
Federal High	%					2.27%									
PERMANENT															
Prior FY	#	42,623	38720	1111	2532	260	21	14	2	14	5	60	22	116	6
	%	100.0%	90.8%	2.6%	5.9%	0.6%	0.0%	0.0%	0.0%	0.0%	0.0%	0.1%	0.1%	0.3%	0.0%
Current FY	#	43,055	39028	1143	2651	233	11	7	2	7	4	59	20	117	6
	%	1.0%	0.9%	0.0%	0.1%	0.0%	0.0%	0.0%	0.0%	0.0%	0.0%	0.0%	0.0%	0.0%	0.0%
Difference	#	432	308	32	119	-27	-10	-7	0	-7	-1	-1	-2	1	0
Ratio Change	%	0.0%	-0.2%	0.0%	0.2%	-0.1%	0.0%	0.0%	0.0%	0.0%	0.0%	0.0%	0.0%	0.0%	0.0%
Net Change	%	1.0%	0.8%	2.9%	4.7%	-10.4%	-47.6%	-50.0%	0.0%	-50.0%	-20.0%	-1.7%	-9.1%	0.9%	0.0%
TEMPORARY															
Prior FY	#	1,838	1617	90	125	6	1	0	0	0	0	0	0	4	1
	%	100.0%	88.0%	4.9%	6.8%	0.3%	0.1%	0.0%	0.0%	0.0%	0.0%	0.0%	0.0%	0.2%	0.1%
Current FY	#	1,791	1590	80	115	6	1	0	0	0	0	2	0	3	0
	%	1.0%	0.9%	0.0%	0.1%	0.0%	0.0%	0.0%	0.0%	0.0%	0.0%	0.0%	0.0%	0.0%	0.0%
Difference	#	-47	-27	-10	-10	0	0	0	0	0	0	2	0	-1	-1
Ratio Change	%	0.0%	0.8%	-0.4%	-0.4%	0.0%	0.0%	0.0%	0.0%	0.0%	0.0%	0.1%	0.0%	-0.1%	-0.1%
Net Change	%	-2.6%	-1.7%	-11.1%	-8.0%	0.0%	0.0%	#DIV/0!	#DIV/0!	#DIV/0!	0.0%	#DIV/0!	#DIV/0!	-25.0%	-100.0%

Table A2: TOTAL WORKFORCE (PERMANENT EMPLOYEES ONLY) BY COMPONENT - Distribut

Employment Tenure	Total Employees	RACE/ETHNICITY							Multiple Races
		Non-Hispanic or Latino							
		Hispanic or Latino	White	Black or African American	Asian	Native Hawaiian or Other Pacific Islander	American Indian or Alaska Native		
All									
TOTAL FY	#	43,055	1,872	29,084	6,817	4,705	54	281	262
	%	1	15.8%	10.9%	0.1%	0.7%	0.6%	0.0%	0.0%
CLF (2000)	%	100	10.7%	72.7%	10.5%	3.6%	0.2%	0.6%	0.0%
51-O/S	#	748	19	410	268	39	1	4	7
	%	100.0%	2.5%	54.8%	35.8%	5.2%	0.1%	0.5%	36.8%
52-EDA	#	172	6	119	38	7	0	1	1
	%	100.0%	3.5%	69.2%	22.1%	4.1%	0.0%	0.6%	16.7%
53-BEA	#	483	16	313	102	50	0	1	1
	%	100.0%	3.3%	64.8%	21.1%	10.4%	0.0%	0.2%	6.3%
54-NOAA	#	12393	337	10278	1006	614	29	82	47
	%	100.0%	2.7%	82.9%	8.1%	5.0%	0.2%	0.7%	13.9%
55-ITA	#	1347	53	999	197	85	0	3	10
	%	100.0%	3.9%	74.2%	14.6%	6.3%	0.0%	0.2%	18.9%
57-NIST	#	2765	73	2174	230	261	1	13	13
	%	100.0%	2.6%	78.6%	8.3%	9.4%	0.0%	0.5%	17.8%
59-MBDA	#	57	12	7	33	4	0	0	1
	%	100.0%	21.1%	12.3%	57.9%	7.0%	0.0%	0.0%	8.3%
61-NTIA	#	235	6	147	56	23	0	3	0
	%	100.0%	2.6%	62.6%	23.8%	9.8%	0.0%	1.3%	0.0%
62-NTIS	#	110	1	64	35	8	0	0	2
	%	100.0%	0.9%	58.2%	31.8%	7.3%	0.0%	0.0%	200.0%
63-CENSUS	#	13269	963	9044	2397	582	19	139	125
	%	100.0%	7.3%	68.2%	18.1%	4.4%	0.1%	1.0%	13.0%
64-OIG	#	125	4	79	25	15	0	1	1
	%	100.0%	3.2%	63.2%	20.0%	12.0%	0.0%	0.8%	25.0%
65-ESA	#	31	3	21	6	1	0	0	0
	%	100.0%	9.7%	67.7%	19.4%	3.2%	0.0%	0.0%	0.0%
67-BIS	#	370	10	243	88	26	0	1	2
	%	100.0%	2.7%	65.7%	23.8%	7.0%	0.0%	0.3%	20.0%
67-PTO	#	10950	369	5166	2336	2990	4	33	52
	%	100.0%	3.4%	47.2%	21.3%	27.3%	0.0%	0.3%	14.1%

PTOTAL	HISPMA	WHMA	BLMA	SIANMA	HAWMA	AMINDMA	Multiple Rad	TTOTAL	THISPMALE	TWHMALE	TBLMALE	ASIANMAL	NHAWMAL	AMINDMAL	Multiple Rad	AGENCY
748	19	410	268	39	1	4	7	81	3	49	19	8	0	0	2	O/S
172	6	119	38	7	0	1	1	27	0	14	10	2	0	0	1	EDA
483	16	313	102	50	0	1	1	13	0	10	2	0	0	0	1	BEA
12393	337	10278	1006	614	29	82	47	381	6	323	25	18	4	2	3	NOAA
1347	53	999	197	85	0	3	10	119	8	95	4	10	0	1	1	ITA
2765	73	2174	230	261	1	13	13	342	7	275	17	40	0	0	3	NIST
57	12	7	33	4	0	0	1	15	2	3	8	0	0	0	2	MBDA
235	6	147	56	23	0	3	0	45	0	39	3	2	0	0	1	NTIA
110	1	64	35	8	0	0	2	1	0	1	0	0	0	0	0	NTIS
13269	963	9044	2397	582	19	139	125	684	46	446	137	34	1	1	19	CENSUS
125	4	79	25	15	0	1	1	5	1	2	1	1	0	0	0	OIG
31	3	21	6	1	0	0	0	5	0	4	1	0	0	0	0	ESA
370	10	243	88	26	0	1	2	16	0	13	1	2	0	0	0	BIS
10950	369	5166	2336	2990	4	33	52	57	0	46	6	4	0	0	1	PTO

51
52
53
54
55
57
59
61
62
63
64
65
67
88

Table B2: PERMANENT EMPLOYEES - TOTAL WORKFORCE BY COMPONENT- Distribution by Disability [OPM Form 256 Self-Identification Codes]

Employment Tenure	Total	Total by Disability Status				Detail for Targeted Disabilities									
		[05] No Disability	[01] Not Identified	[06-94] Disability	Targeted Disability	[16,17] Deafness	[23,25] Blindness	[28,32-38] Missing Limbs	[64-68] Partial Paralysis	[71-78] Total Paralysis	[82] Convulsive Disorder	[90] Mental Re-tardation	[91] Mental Illness	[92] Distortion of Limb/Spine	
Total Work Force	# 43,055	39,028	1,143	2,651	233	11	7	2	7	4	59	20	117	6	
	% 100.00%	90.65%	2.65%	6.16%	0.54%	0.03%	0.02%	0.00%	0.02%	0.01%	0.14%	0.05%	0.27%	0.01%	
Federal High	%				2.27%										
51-O/S	# 748	680	24	39	5	0	0	0	0	0	2	0	3	0	
	% 100.00%	90.91%	3.21%	5.21%	0.67%	0.00%	0.00%	0.00%	0.00%	0.00%	0.27%	0.00%	0.40%	0.00%	
52-EDA	# 172	161	2	7	2	0	0	0	1	0	0	0	1	0	
	% 100.00%	93.60%	1.16%	4.07%	1.16%	0.00%	0.00%	0.00%	0.58%	0.00%	0.00%	0.00%	0.58%	0.00%	
53-BEA	# 483	452	14	17	0	0	0	0	0	0	0	0	0	0	
	% 100.00%	93.58%	2.90%	3.52%	0.00%	0.00%	0.00%	0.00%	0.00%	0.00%	0.00%	0.00%	0.00%	0.00%	
54-NOAA	# 12,393	11456	254	637	46	6	4	0	1	3	9	5	17	1	
	% 100.00%	92.44%	2.05%	5.14%	0.37%	0.05%	0.03%	0.00%	0.01%	0.02%	0.07%	0.04%	0.14%	0.01%	
55-ITA	# 1,347	1287	17	39	4	0	1	0	0	0	0	0	3	0	
	% 100.00%	95.55%	1.26%	2.90%	0.30%	0.00%	0.07%	0.00%	0.00%	0.00%	0.00%	0.00%	0.22%	0.00%	
57-NIST	# 2,765	2542	69	136	18	0	0	2	0	0	2	5	7	2	
	% 100.00%	91.93%	2.50%	4.92%	0.65%	0.00%	0.00%	0.07%	0.00%	0.00%	0.07%	0.18%	0.25%	0.07%	
59-MBDA	# 57	49	3	4	1	0	0	0	0	0	0	1	0	0	
	% 100.00%	85.96%	5.26%	7.02%	1.75%	0.00%	0.00%	0.00%	0.00%	0.00%	0.00%	1.75%	0.00%	0.00%	
61-NTIA	# 235	212	4	19	0	0	0	0	0	0	0	0	0	0	
	% 100.00%	90.21%	1.70%	8.09%	0.00%	0.00%	0.00%	0.00%	0.00%	0.00%	0.00%	0.00%	0.00%	0.00%	
62-NTIS	# 110	98	1	7	4	0	0	0	0	0	0	2	1	1	
	% 100.00%	89.09%	0.91%	6.36%	3.64%	0.00%	0.00%	0.00%	0.00%	0.00%	0.00%	1.82%	0.91%	0.91%	
63-CENSUS	# 13,269	11508	392	1268	101	0	0	0	0	0	30	6	64	1	
	% 100.00%	86.73%	2.95%	9.56%	0.76%	0.00%	0.00%	0.00%	0.00%	0.00%	0.23%	0.05%	0.48%	0.01%	
64-OIG	# 125	112	3	10	0	0	0	0	0	0	0	0	0	0	
	% 100.00%	89.60%	2.40%	8.00%	0.00%	0.00%	0.00%	0.00%	0.00%	0.00%	0.00%	0.00%	0.00%	0.00%	
65-ESA	# 31	30	0	1	0	0	0	0	0	0	0	0	0	0	
	% 100.00%	96.77%	0.00%	3.23%	0.00%	0.00%	0.00%	0.00%	0.00%	0.00%	0.00%	0.00%	0.00%	0.00%	
67-BIS	# 370	352	3	13	2	0	0	0	0	0	0	0	2	0	
	% 100.00%	95.14%	0.81%	3.51%	0.54%	0.00%	0.00%	0.00%	0.00%	0.00%	0.00%	0.00%	0.54%	0.00%	

AGENCY	PTOTAL	Hispanic or Latino	White	Black or African American	Asian	Native Hawaiian or Other Pacific Islander	American Indian or Alaska Native	Multiple Races	Targeted Disability
BEA	483	16	313	104	50	0	1	1	0
Workforce		3.31	64.80	21.53	10.35	0.00	0.00	0.21	0.00
CLF		10.7	72.7	10.5	3.6	0.2	0.6	0.3	2.27
BIS	370	10	243	88	26	0	1	2	2
Workforce		2.70	65.68	23.78	7.03	0.00	0.27	0.00	0.54
CLF		10.7	72.7	10.5	3.6	0.2	0.6	0.8	2.27
CENSUS	13269	963	9044	2397	582	19	139	125	101
Workforce		7.26	68.16	18.06	4.39	0.14	1.05	0.94	0.76
CLF		10.7	72.7	10.5	3.6	0.2	0.6	0.8	2.27
EDA	172	6	119	38	7	0	1	1	2
Workforce		3.49	69.19	22.09	4.07	0.00	0.58	0.58	1.16
CLF		10.7	72.7	10.5	3.6	0.2	0.6	0.8	2.27
ESA	31	3	21	6	1	0	0	0	0
Workforce		9.68	67.74	19.35	3.23	0.00	0.00	0.00	0.00
CLF		10.7	72.7	10.5	3.6	0.2	0.6	0.8	2.27
ITA	1347	53	999	197	85	0	3	10	4
Workforce		3.93	74.16	14.63	6.31	0.00	0.22	0.74	0.30
CLF		10.7	72.7	10.5	3.6	0.2	0.6	0.8	2.27
MBDA	57	12	7	33	4	0	0	1	1
Workforce		21.05	12.28	57.89	7.02	0.00	0.00	0.00	1.75
CLF		10.7	72.7	10.5	3.6	0.2	0.6	0.8	2.27
NIST	2765	73	2174	230	261	1	13	13	18
Workforce		2.64	78.63	8.32	9.44	0.04	0.47	0.47	0.65
CLF		10.7	72.7	10.5	3.6	0.2	0.6	0.8	2.27
NOAA	12393	337	10278	1006	614	29	82	47	46
Workforce		2.72	82.93	8.12	4.95	0.23	0.66	0.38	0.37
CLF		10.7	72.7	10.5	3.6	0.2	0.6	0.8	2.27
NTIA	235	6	147	56	23	0	3	0	0
Workforce		2.55	62.55	23.83	9.79	0.00	1.28	0.00	0.00
CLF		10.7	72.7	10.5	3.6	0.2	0.6	0.8	2.27
NTIS	110	1	64	35	8	0	0	2	4
Workforce		0.91	58.18	31.82	7.27	0.00	0.00	1.82	3.64
CLF		10.7	72.7	10.5	3.6	0	0	0.8	2.27
O/S	748	19	410	268	39	1	4	7	5
Workforce		2.54	54.81	35.83	5.21	0.13	0.53	0.94	0.67
CLF		10.7	72.7	10.5	3.6	0.2	0.6	0.8	2.27
OIG	125	4	79	25	15	0	1	1	0
Workforce		3.20	63.20	20.00	12.00	0.00	0.80	0.80	0.00
CLF		10.7	72.7	10.5	3.6	0.2	0.6	0.8	2.27
Sub Total	32105	1503	23898	4483	1715	50	248	211	183
Workforce		4.68	74.44	13.96	5.34	0.16	0.77	0.66	0.57
CLF		10.7	72.7	10.5	3.6	0.2	0.6	0.8	2.27
PTO	10950	369	5166	2336	2990	4	33	52	50
Workforce		3.37	47.18	21.33	27.31	0.04	0.30	0.47	0.46
CLF		10.7	72.7	10.5	3.6	0.2	0.6	0.8	2.27
TOTAL	43,055	1872	29064	6819	4705	54	281	263	233
Workforce		4.35	67.50	15.84	10.93	0.13	0.65	0.61	0.54
CLF		10.7	72.7	10.5	3.6	0.2	0.6	0.8	2.27